

Cut-phase Dimmer 35W version

cod. **SPTD7033-WW** 3000K

cod. **SPTD7033-NW** 4000K

FEATURES:

- 230 V ac 50Hz, 35W
- 35W interchangeable LED Module
- Color temperature 3000 K and 4000 K
- CRI>90
- Adjustable zoom from 7° to 48°
- Manual zoom
- Linear dimmer 5-100%
- Dimmer through cut-phase regulator (Trailing edge)
- Power connections, Cable
- Heatsink with low noise fan, max 8 dB
- Filter frame included
- Barndoor 4 leaves optional
- Aluminium and steel plate body. Scratch resistant epoxy powder paint
- IP20
- Insulation calss I
- Suitable to be fitted on normally inflammable surfaces



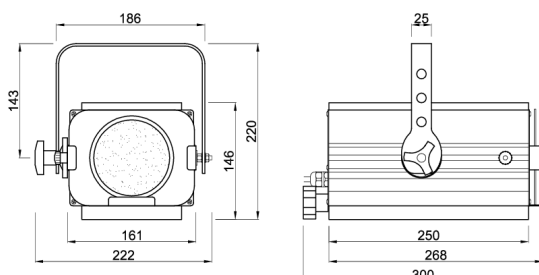
Available in different body colors



Replaceable LED module high efficiency, long life, available in two different temperatures of white, 3000K and 4000K, high CRI> 90, manually adjustable zoom 7° to 48°.

Dimmable through cut-phase regulators, recommended Trailing Edge type.

The master dimmer has a soft and continuous adjustment from 5 to 100%.



Barndoor
cod. PR8060